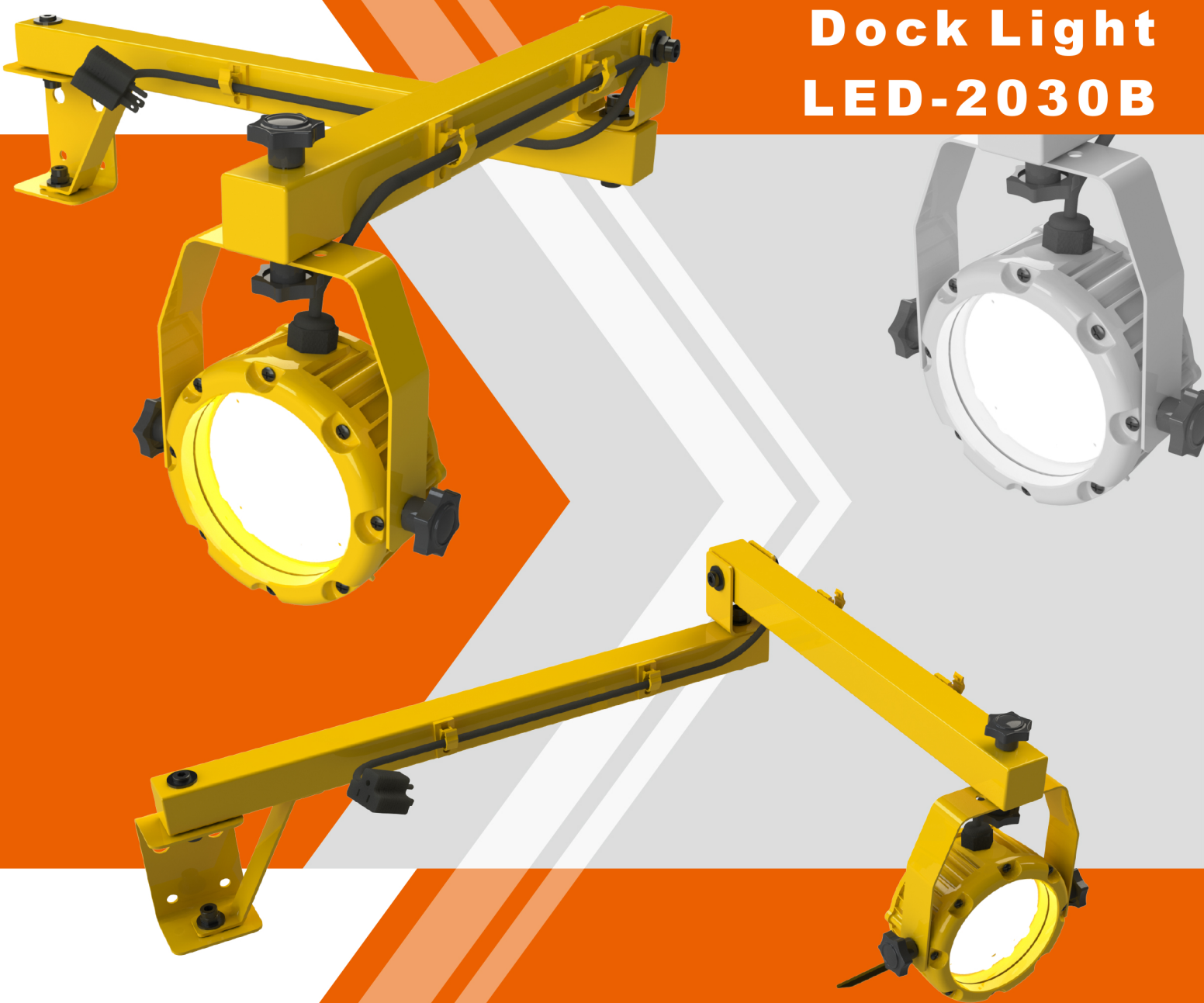


Grandlite®

Dock Light LED-2030B



APPLICATIONS

	Street & Tunnel
	Park
	Gas Station
	Parking
	Industrial Site

Meets DLC 5.1
Requirements

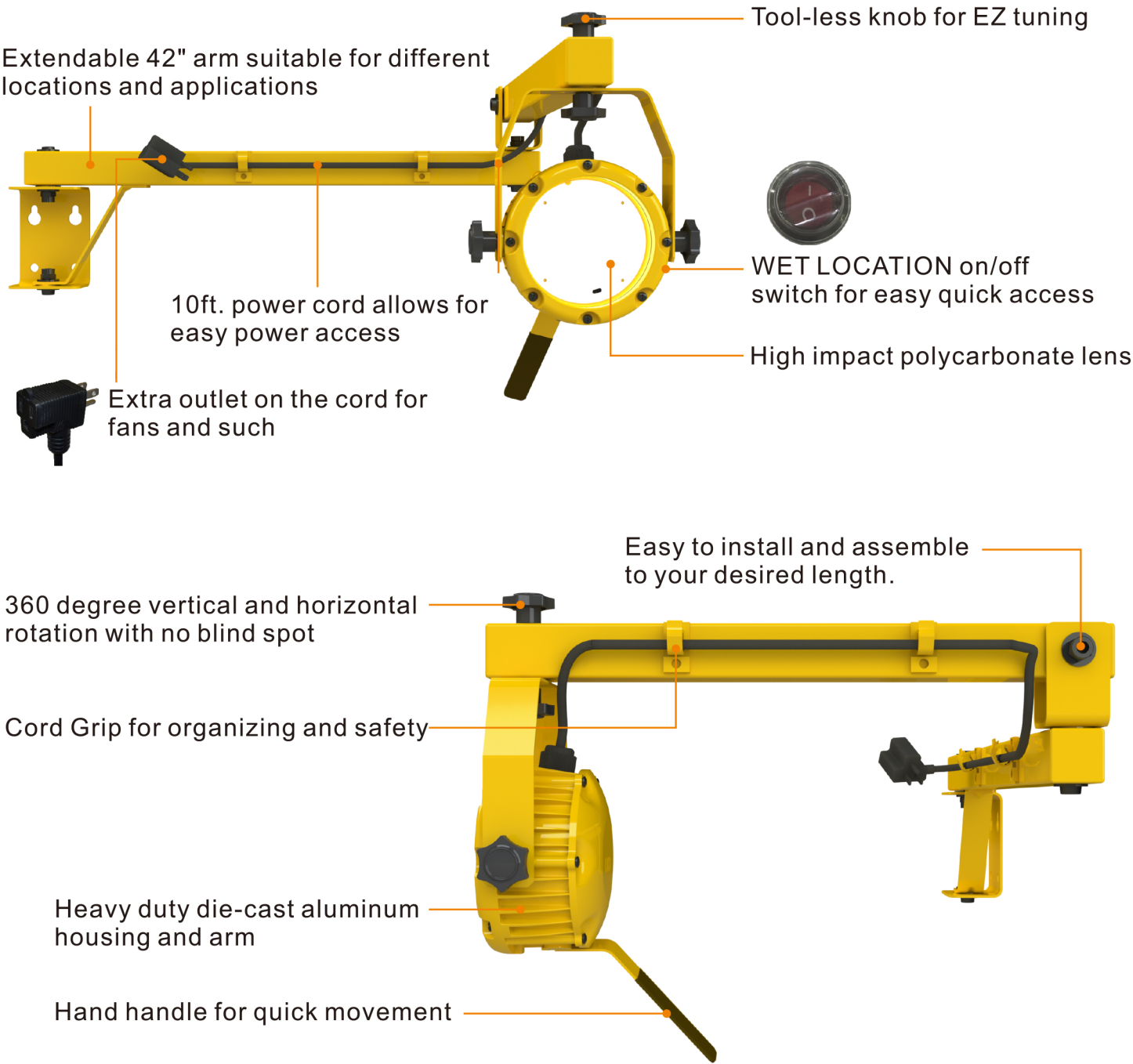


2021-12

Dock Light



Product Description:



Scan QR CODE
for more information

* Different LED Kelvin temperature available with 4-6 week lead time. Please call for a quote.
** DISCLAIMER: This test report was produced in accordance with IES LM-79 photometric testing protocol for luminaires, using a single representative test fixture. Actual production units may vary from the values reported here by up to ±10%.



Product Description:

360-degree heavy duty dock light is perfect for different construction sites. With the 42" adjustable arm, this dock light can illuminate areas in any direction. In addition, the adjustable knobs and built-in on/off switch allow for easy access of the fixture. Utilizing high performance lumen output and long lasting driver, this dock light will last for years to come.

Optional Kelvin color* with adder.

Features:

- LISTING**
 - UL and CUL listed for damp locations
- HOUSING**
 - Heavy duty die-cast aluminum
- FINISH**
 - UV stabilized powder coated finish
- OPTIONS**
 - Finish - Yellow. Color options with adder

Performance Data

Model NO.	System Watts	Lumens	Efficacy
LED-2030B	28W	3364 lm	122 lm/W

Specification:

Example: LED-2030B

Model No.	System Watts	Input Voltage	CRI*	Color Temp*	Finish	Distribution	Option
LED-2030B	30W	UNV= 120-277VAC	7=70+	50=5000 K	Yellow	Type V	BLANK = No Sensor

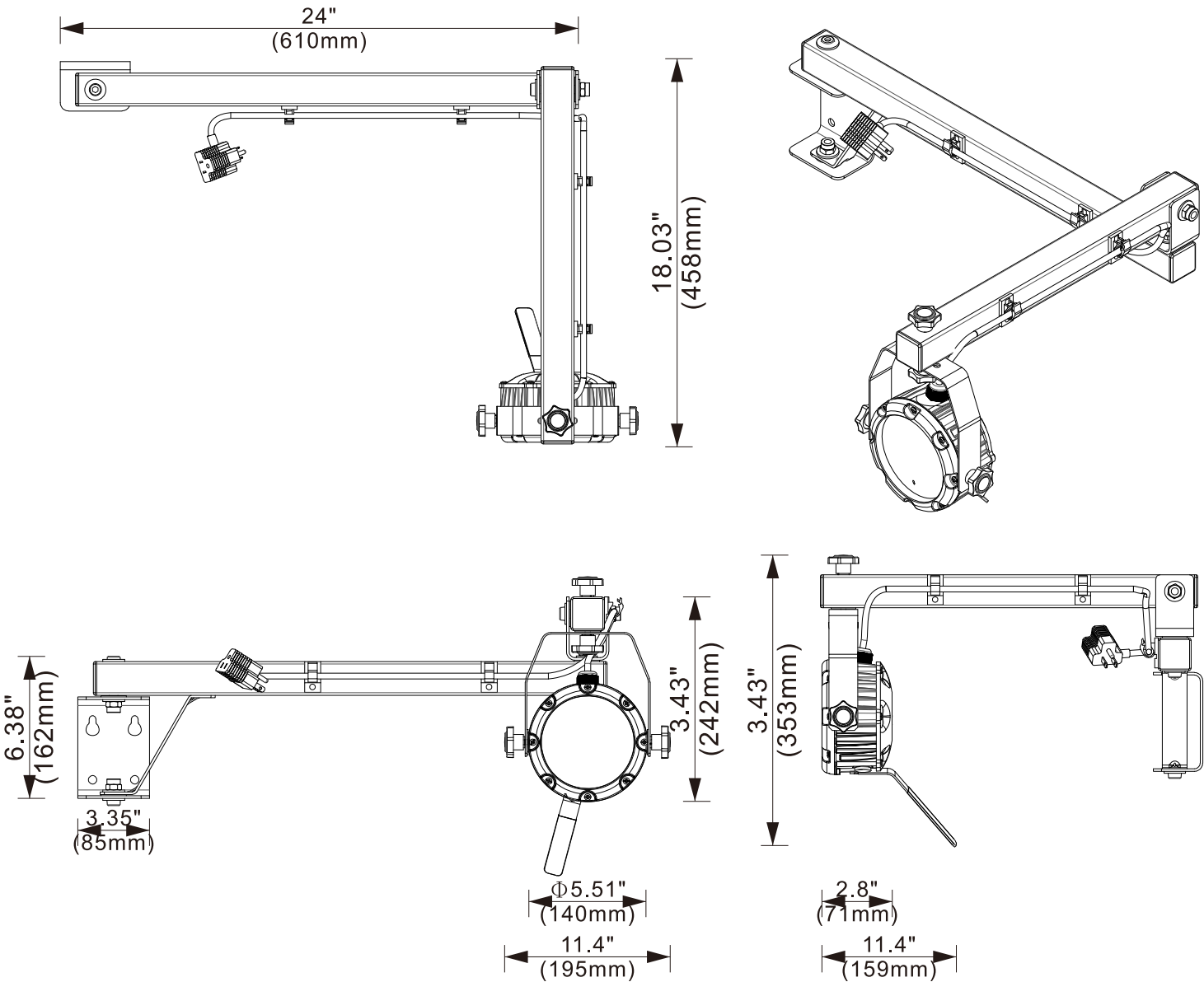


Scan QR CODE
for more information



* Different LED Kelvin temperature available with 4-6 week lead time. Please call for a quote.
** DISCLAIMER: This test report was produced in accordance with IES LM-79 photometric testing protocol for luminaires, using a single representative test fixture. Actual production units may vary from the values reported here by up to ±10%.

Dimension:



505 S. Yorbita Road, City of Industry, CA 91744, USA
Tel: (626) 839-8868 Fax: (626) 581-8099
e-mail: sales@grandlite.com
www.grandliteled.com

* Different LED Kelvin temperature available with 4-6 week lead time. Please call for a quote.
** DISCLAIMER: This test report was produced in accordance with IES LM-79 photometric testing protocol for luminaires, using a single representative test fixture. Actual production units may vary from the values reported here by up to ±10%.

