

LED Flood Light
LED-2080



The LED-2080 is a powerful luminaire that has been designed to meet a wide variety of installation locations. With the various mounting options it can be used as a flood light or as an area light. With the LEDs mounted on the large heatsinks the fixture can maintain a high lumen output while keeping the LED modules at a cool temperature.

Optional Kelvin color* with adder.

AVAILABLE OPTIONS



U Bracket



Slip Fitter



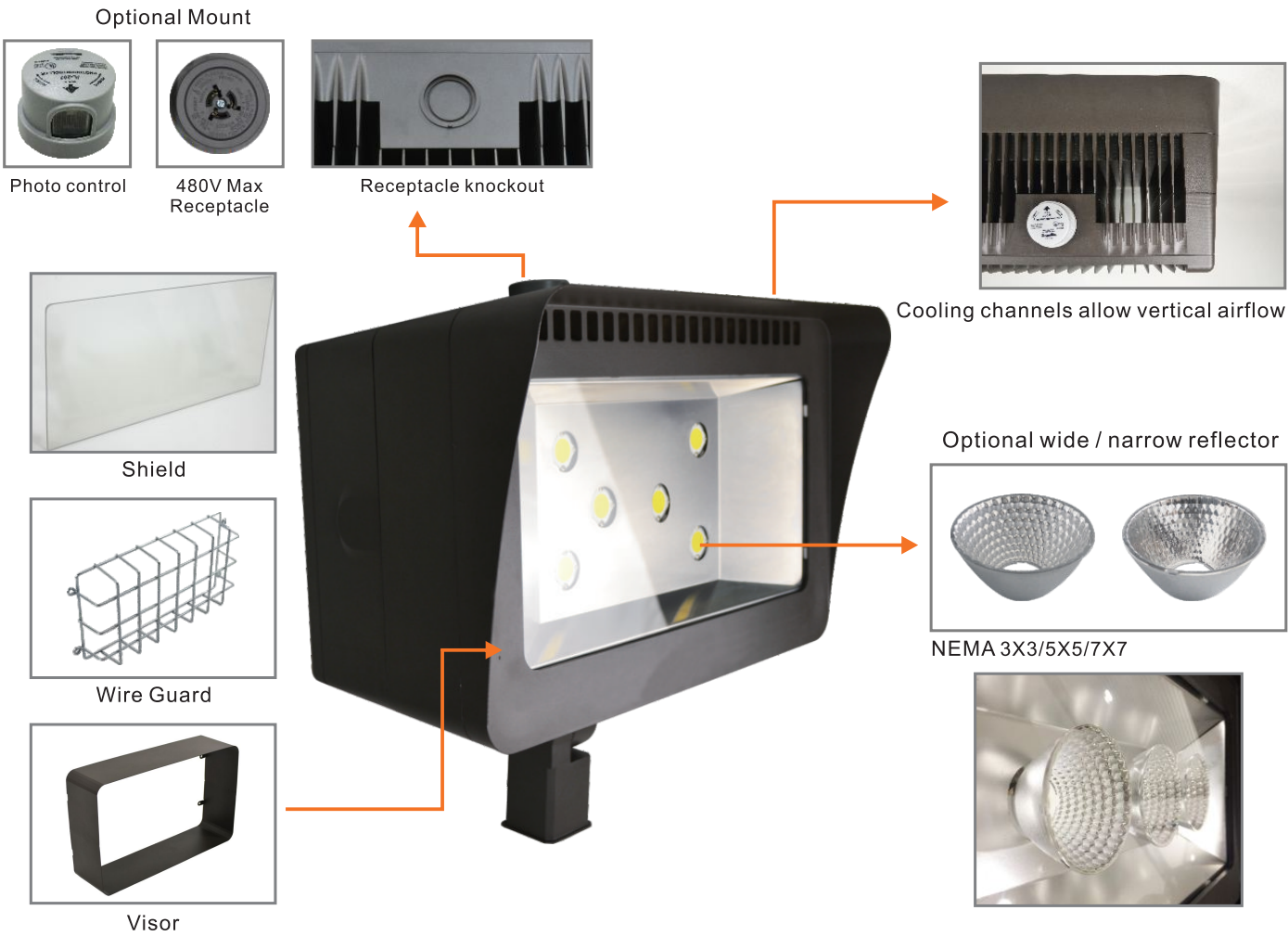
Trunnion

FEATURES	
LISTING UL and CUL listed for wet locations	
HOUSING Heavy duty die-cast aluminum powder coating, corrosion resistant hardware	
FINISH UV stabilized powder coated finish	
LENS Heat and impact resistant tempered glass	
OPTIONS Optional 347V with adder Optional surge protector 10K with adder Optional NEMA photo control with adder Wide / narrow distribution available with adder Finish - Bronze. Color option with adder	

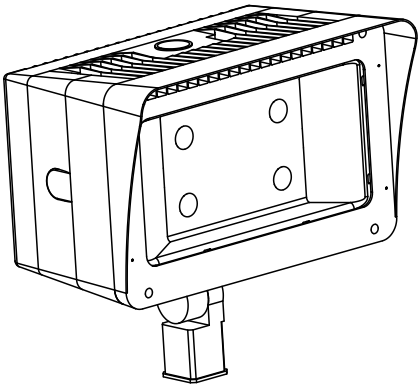
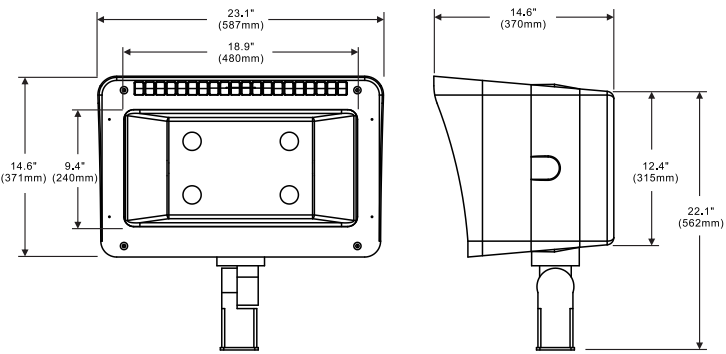
SPECIFICATION		
Model No.	LED-2080-L4	LED-2080-L6
System watts	336	408
Lumen Output	40675 lm**	48501 lm**
Color	5000K	
MA	1480MA	1150MA
Input Voltage	120~277V	
CRI	70+	
Starting Temp	-40°C	
Equivalent	1000W MH	1500W MH

* Different LED Kelvin temperature available with 4-6 week lead time. Please call for a quote.
** DISCLAIMER: This test report was produced in accordance with IES LM-79 photometric testing protocol for luminaires, using a single representative test fixture. Actual production units may vary from the values reported here by up to ±10%.

LED Flood Light
LED-2080



DIMENSIONS



* Different LED Kelvin temperature available with 4-6 week lead time. Please call for a quote.
** DISCLAIMER: This test report was produced in accordance with IES LM-79 photometric testing protocol for luminaires, using a single representative test fixture. Actual production units may vary from the values reported here by up to ±10%.