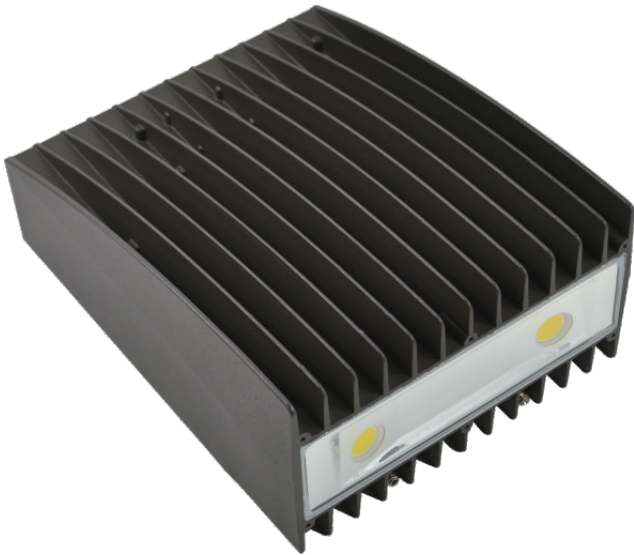


LED Surface Mount Light
LED-1860-L2



Powered by

This newly designed luminaire with built-in heatsink in casting featuring its versatility that can be served as wall light, flood light and etc. Incorporated with high performance Led module along with high quality optical reflector, this fixture performs efficiently and steadily against harsh outdoor environment .

Optional Kelvin color* with adder.

AVAILABLE OPTIONS



Thru Wiring



Photo Control



Quick mount



Trunnion



Brackets



Slip fitter

FEATURES

- LISTING**
UL and CUL listed for wet locations
- HOUSING**
Solid construction die-cast aluminum body
- FINISH**
UV stabilized powder coated finish
- LENS**
High-impact resistant tempered glass
- OPTIONS**
Optional photo control with adder
Finish - Bronze. Color option with adder

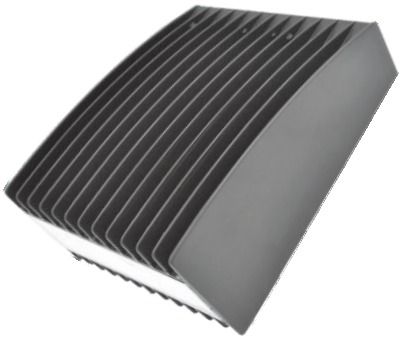
SPECIFICATION

Model No.	LED-1860-L2	
System watts	60	82
Lumen Output	6743 lm**	7970 lm**
Color	5000 K	
MA	700 MA	950 MA
Input Voltage	120~277V	
CRI	70+	
Starting Temp	-40°C	
Equivalent	250W MH	

* Different LED Kelvin temperature available with 4-6 week lead time. Please call for a quote.
** DISCLAIMER: This test report was produced in accordance with IES LM-79 photometric testing protocol for luminaires, using a single representative test fixture. Actual production units may vary from the values reported here by up to ±10%.

LED Surface Mount Light
LED-1860-L2

Powered by



LED-1860-L2



LED-1860-TR L2

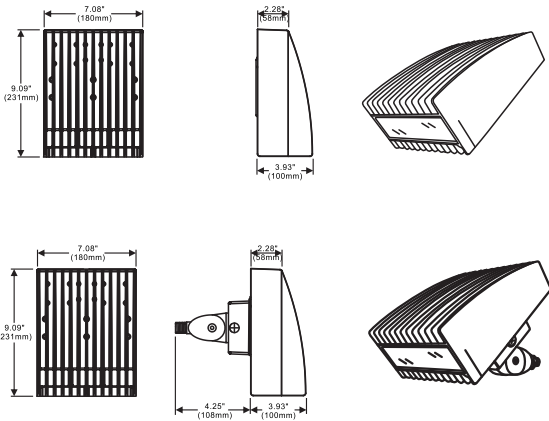


LED-1860-SFS L2

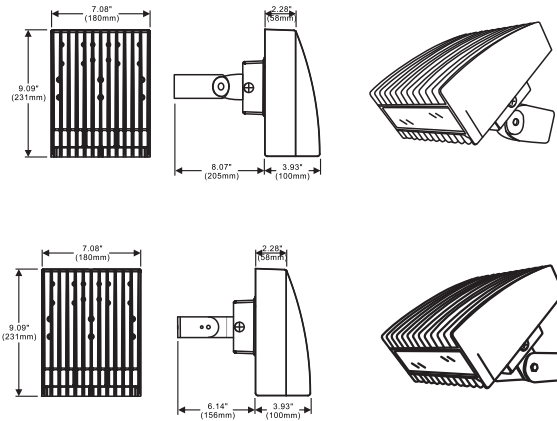


LED-1860-SFB L2

DIMENSIONS



LINE DRAWING



* Different LED Kelvin temperature available with 4-6 week lead time. Please call for a quote.
** DISCLAIMER: This test report was produced in accordance with IES LM-79 photometric testing protocol for luminaires, using a single representative test fixture. Actual production units may vary from the values reported here by up to ±10%.