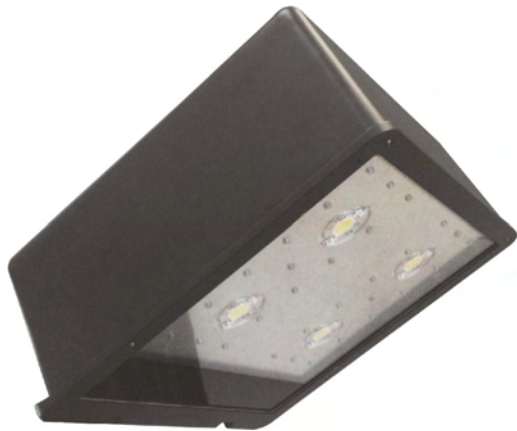


ARL-822



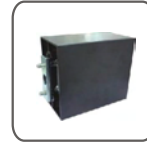
ARL-822 is truly an energy-efficient roadway fixture. ARL-822 provides uniform light distribution in any given environment while minimum power. Its sides are constructed by die-cast aluminum while its patented centerpiece is designed to maximize heat dissipation from the LED light engine. This technology allows the fixture to run cooler maximizing LED and driver operating life. The powder painted "BodyGuard" finish provides excellent protection.



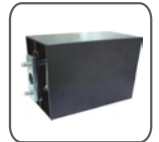
Slip fitter



Trunnion



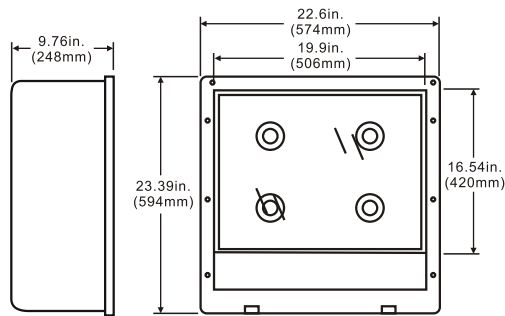
Pole mount(6")



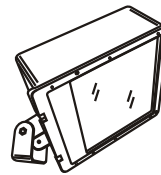
Pole mount(10")

Optional mounting and Kelvin color* with adder.

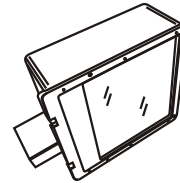
Dimensions



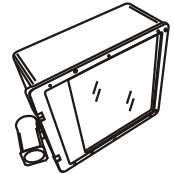
Line Drawing



Yoke



6" Arm



Slipfitter

Features

- UL and CUL listed for wet locations
- Heavy duty die-cast aluminum powder coating, corrosion resistant hardware
- Heat and impact resistant tempered glass

- Gasket included to prevent any leakage from the outside
- Finish - Bronze

Specification

Model No.	System watts	Lumen Output	Color	MA	Input Voltage	CRI	Starting Temp	Equivalent
ARL-822	250	30986m**	5000K	1050MA	120~277V	70+	-40°C	1000W MH

* Different LED Kelvin temperature available with 4-6 week lead time. Please call for a quote.

** DISCLAIMER: This test report was produced in accordance with IES LM-79 photometric testing protocol for luminaires, using a single representative test fixture. Actual production units may vary from the values reported here by up to ±10%.

Powered by CREE LEDs



IP65

www.grandlite.com
Fixture Catalog V3.0