



## LED Surface Mount Light

### LED-1150

#### Product Description:

This newly designed luminaire with built-in heatsink in casting featuring its versatility that can be served as wall light, flood light and etc. Incorporated with high performance LEDs along with high quality optical reflector, this fixture performs efficiently and steadily against harsh outdoor environment .

Optional mounting and Kelvin color\* with adder.

#### Features:

##### LISTING

UL and CUL listed for wet locations

##### HOUSING

Solid construction die-cast aluminum body

##### FINISH

UV stabilized powder coated finish

##### LENS

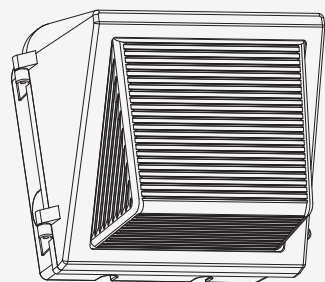
High-impact resistant tempered glass

##### OPTIONS

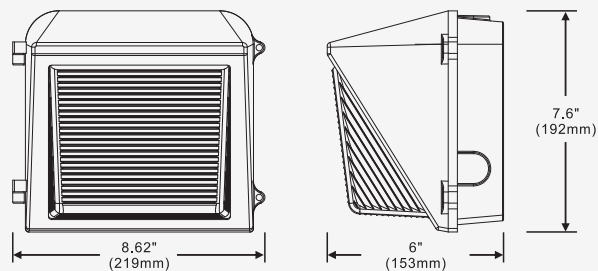
Optional photo control with adder

Finish - Bronze. Color option with adder

#### Line Drawing



#### Dimensions



\* Different LED Kelvin temperature available with 4-6 week lead time. Please call for a quote.

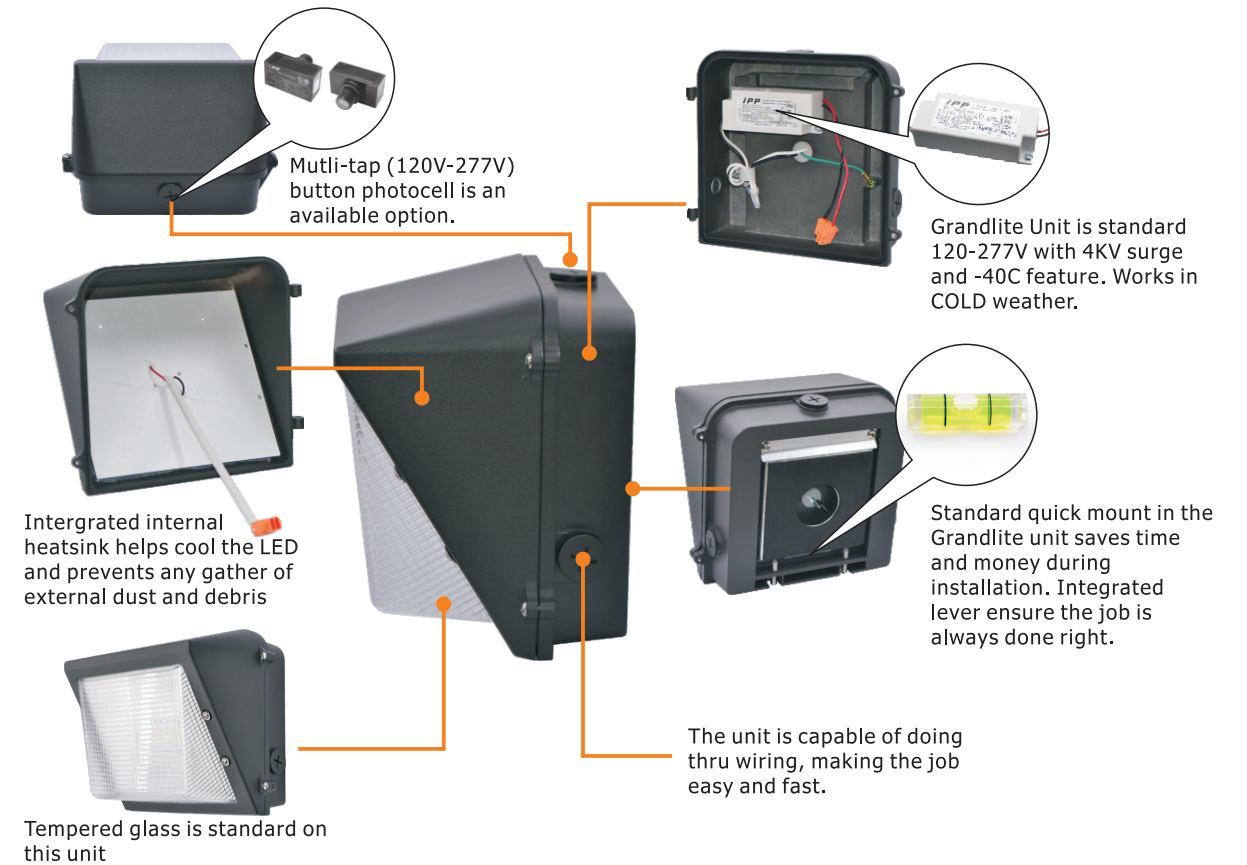
\*\* DISCLAIMER: This test report was produced in accordance with IES LM-79 photometric testing protocol for luminaires, using a single representative test fixture. Actual production units may vary from the values reported here by up to ±10%.



## LED Surface Mount Light

### LED-1150

#### Product Description:



#### Performance Data

Model NO.	System Watts	Dist. Type	Lumens	Lpw	B	U	G
LED-1150	12 W	Type II	1701 lm**	142 lm/W	2	3	2
	18.5 W	Type II	2599 lm**	140 lm/W	2	3	2
	29 W	Type II	3645 lm**	126 lm/W	2	3	2

#### Specification:

Example: LED-1150 013UNV750

Model No.	System Watts	Input Voltage	CRI	Color Temp	Option	Feature	Finish	Starting Temp
LED-1150	012=12W 018.5=18.5W 029=29W	UNV=120-277V	7=70+	40=4000 K 50=5000 K	XS= 10kV Surge 2S= 20kV Surge	W =Wall Mount	Bronze	-40°C ~ +50°C

\* Different LED Kelvin temperature available with 4-6 week lead time. Please call for a quote.

\*\* DISCLAIMER: This test report was produced in accordance with IES LM-79 photometric testing protocol for luminaires, using a single representative test fixture. Actual production units may vary from the values reported here by up to ±10%.

