



LED Area Light/LED Flood Light

LED-560P-L40



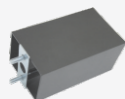
Available Options



Slip fitter



Trunnion

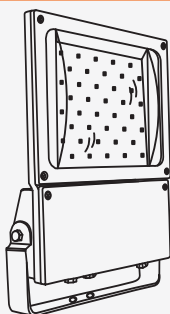


Pole mount

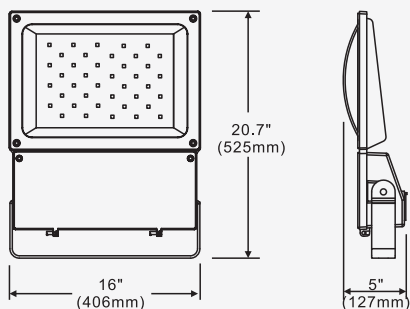


Photo control

Line Drawing



Dimensions



Product Description:

This powerful luminaire has been designed to meet diversified installation requirements. It can be used as a flood light and an area light. With built-in heatsinks on the back of the luminaire, the LED560 provides truly spectacular light while keeping the LEDs at a cool temperature.

Optional mounting and Kelvin color* with adder.

Features:

LISTING

UL and CUL listed for wet locations

HOUSING

Solid construction die-cast aluminum body

FINISH

UV stabilized power coated finish

LENS

Heat and impact resistant tempered glass

OPTIONS

Twist lock photocell with adder

Front hinged cover

Dimmable option with adder

Finish - Bronze. Color option with adder

Specification

Model No. ▶	LED-560P-L40 N3	LED-560P-L40 N5	LED-560P-L40 N7
System watts ▶	113		
Lumen Output ▶	9625 lm**	9839 lm**	9732 lm**
Color ▶	5000 K		
MA ▶	625 MA		
Input Voltage ▶	120~277V		
CRI ▶	70+		
Starting Temp ▶	-40°C		
Equivalent ▶	250W MH		

* Different LED Kelvin temperature available with 4-6 week lead time. Please call for a quote.

** DISCLAIMER: This test report was produced in accordance with IES LM-79 photometric testing protocol for luminaires, using a single representative test fixture. Actual production units may vary from the values reported here by up to ±10%.