

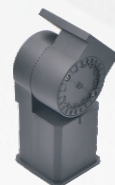


**Grandlite®**  
HIGH POWER LIGHTING SYSTEM

### Available Options



Trunnion



Slip Fitter



Pole Mount

### Product Description:

This slick and modern luminaire has been designed to handle any environment. With a beautiful slimline design along with one of the highest lumen performance on the market, this versatile fixture can be used as a flood light or an area light. Including a multitude of mounting options, surge protection devices, IOT photocell capability, and the most technologically advanced LED's on the market, the LED6032 is ready to conquer the lighting landscape.

Optional Kelvin color\* with adder.

### Features:

#### LISTING

- UL and cUL listed for wet locations

#### HOUSING

- One piece die-cast aluminum body with die-cast hinge panel for easy installation access.

#### LEDS

- The most technologically advanced LED chips in the market

#### FINISH

- UV stabilized powder coated finish

#### LENS

- Optional Type III, Type IV, Type V optics

#### OPTIONS

- Optional 347V or 480V with adder
- Bi-Level Dimmable or Photocontrol optional available with adder
- Finish - Bronze. Color option with adder
- Standard 4kV surge




**Grandlite®**  
HIGH POWER LIGHTING SYSTEM

## Flood Light And Area Light

### LED-6032

### Performance Data

Model No.	System Watts	Dist. Type	Lumens	Lpw	B	U	G
	214W	Type III	32334 lm**	151 lm/W	3	1	3
	214W	Type IV	33487 lm**	156 lm/W	3	1	3
	214W	Type V	33850 lm**	158 lm/W	3	1	3
	302W	Type III	42795 lm**	141 lm/W	3	1	3
	302W	Type IV	44921 lm**	148 lm/W	3	1	3
	302W	Type V	44736 lm**	148 lm/W	3	1	3

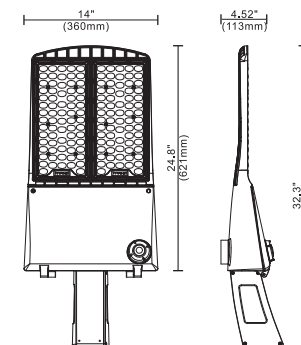
### Specification:

Example: LED-6032

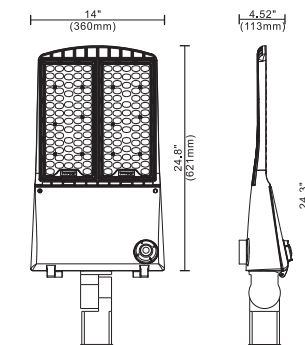
Model No.	System Watts	Input Voltage	CRI	Color Temp	Distribution	Option		Finish	Starting Temp
						Accessories	Mounting		
LED-6032	214=214W 302=302W	UNV=120-277V	7=70+	40=4000 K 50=5000 K	T3=Type III T4=Type IV T5=Type V	XS=10kv Surge OS=Occupancy Sensor PE=Photocontrol 3R=3-pin Receptacle 5R=5-pin Receptacle 7R=7-pin Receptacle	PM=Pole Mount SF=Slip Fitter U=U Bracket	BZ=Bronze	-40°C

### Dimension:

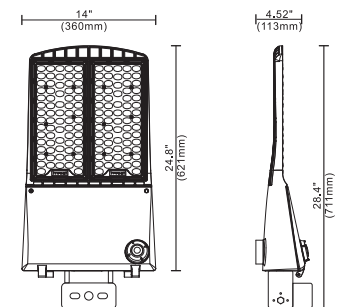
LED-6032PM



LED-6032SF



LED-6032TR



\* Different LED Kelvin temperature available with 4-6 week lead time. Please call for a quote.

\*\* DISCLAIMER: This test report was produced in accordance with IES LM-79 photometric testing protocol for luminaires, using a single representative test fixture. Actual production units may vary from the values reported here by up to ±10%.

\* Different LED Kelvin temperature available with 4-6 week lead time. Please call for a quote.

\*\* DISCLAIMER: This test report was produced in accordance with IES LM-79 photometric testing protocol for luminaires, using a single representative test fixture. Actual production units may vary from the values reported here by up to ±10%.