

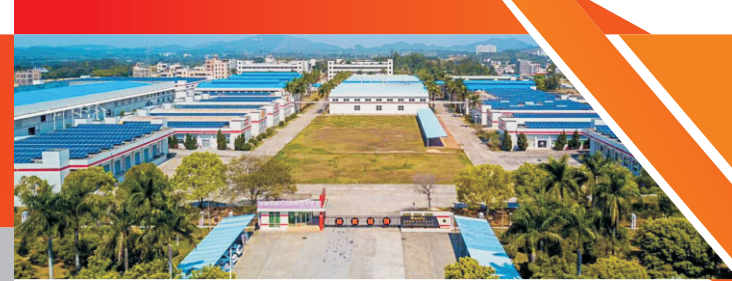


Grandlite®

HIGH POWER LIGHTING SYSTEM

LED Area Light

LED-1571-L1



Grandlite®

HIGH POWER LIGHTING SYSTEM

LED Area Light

LED-1571-L1



Product Description:

This compact but powerful flood light is a true innovation combining practicality and aesthetics. With highly efficient LED engine and precise optical control, greater lighting performance adds the value to its exterior appearance. Multiple mounting methods enable this fixture to be installed in any given environment.

Optional mounting and Kelvin color* with adder.

Features:

LISTING

UL and CUL listed for wet locations

HOUSING

Solid construction die-cast aluminum body

FINISH

UV stabilized powder coated finish

OPTIONS

Optional photo control with adder

Finish - Bronze. Color option with adder

Available Options



Optional photo control



U Bracket



Slip fitter



SFS Brackets



Pole mount

Specification

Model No.	LED-1571-L1	
System watts	21	53
Lumen Output	2463.2 lm**	5469 lm**
Color	5000 K	
MA	480 MA	1260 MA
Input Voltage	120~277V	
CRI	70+	
Starting Temp	-40°C	
Equivalent	100W MH	250W MH

* Different LED Kelvin temperature available with 4-6 week lead time. Please call for a quote.

** DISCLAIMER: This test report was produced in accordance with IES LM-79 photometric testing protocol for luminaires, using a single representative test fixture. Actual production units may vary from the values reported here by up to ±10%.



LED-1571-L1-SFB



LED-1571-L1-SFS

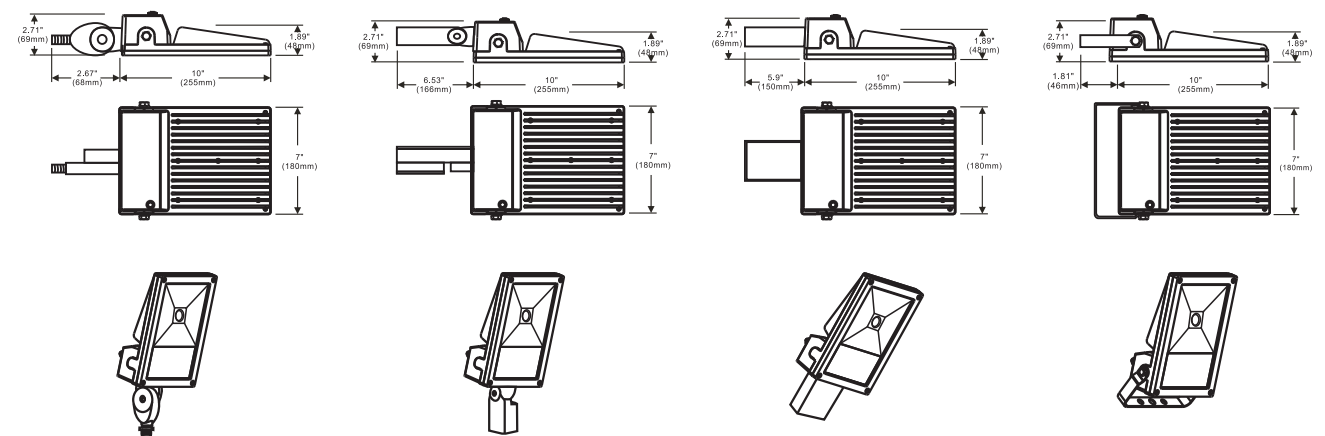


LED-1571-L1-PM



LED-1571-L1-U

Dimensions



Line Drawing

* Different LED Kelvin temperature available with 4-6 week lead time. Please call for a quote.

** DISCLAIMER: This test report was produced in accordance with IES LM-79 photometric testing protocol for luminaires, using a single representative test fixture. Actual production units may vary from the values reported here by up to ±10%.