



Grandlite®

HIGH POWER LIGHTING SYSTEM

LED Area Light

LED-787



Product Description:

The LED-787 is a powerful luminaire that has been designed to meet a wide variety of installation locations. With the various mounting options it can be used as a flood light or as an area light. With the LEDs mounted on the large heatsinks the fixture can maximize a high lumen output while keeping the LED modules at a cool temperature.

Optional mounting and Kelvin color* with adder.

Features:

LISTING

UL and CUL listed for wet locations

HOUSING

Heavy duty die-cast aluminum powder coating, corrosion resistant hardware

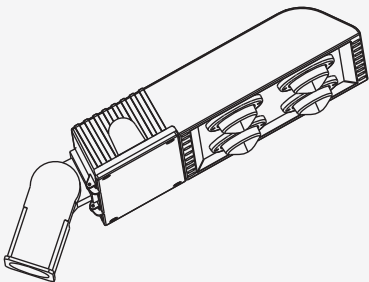
FINISH

UV stabilized powder coated finish

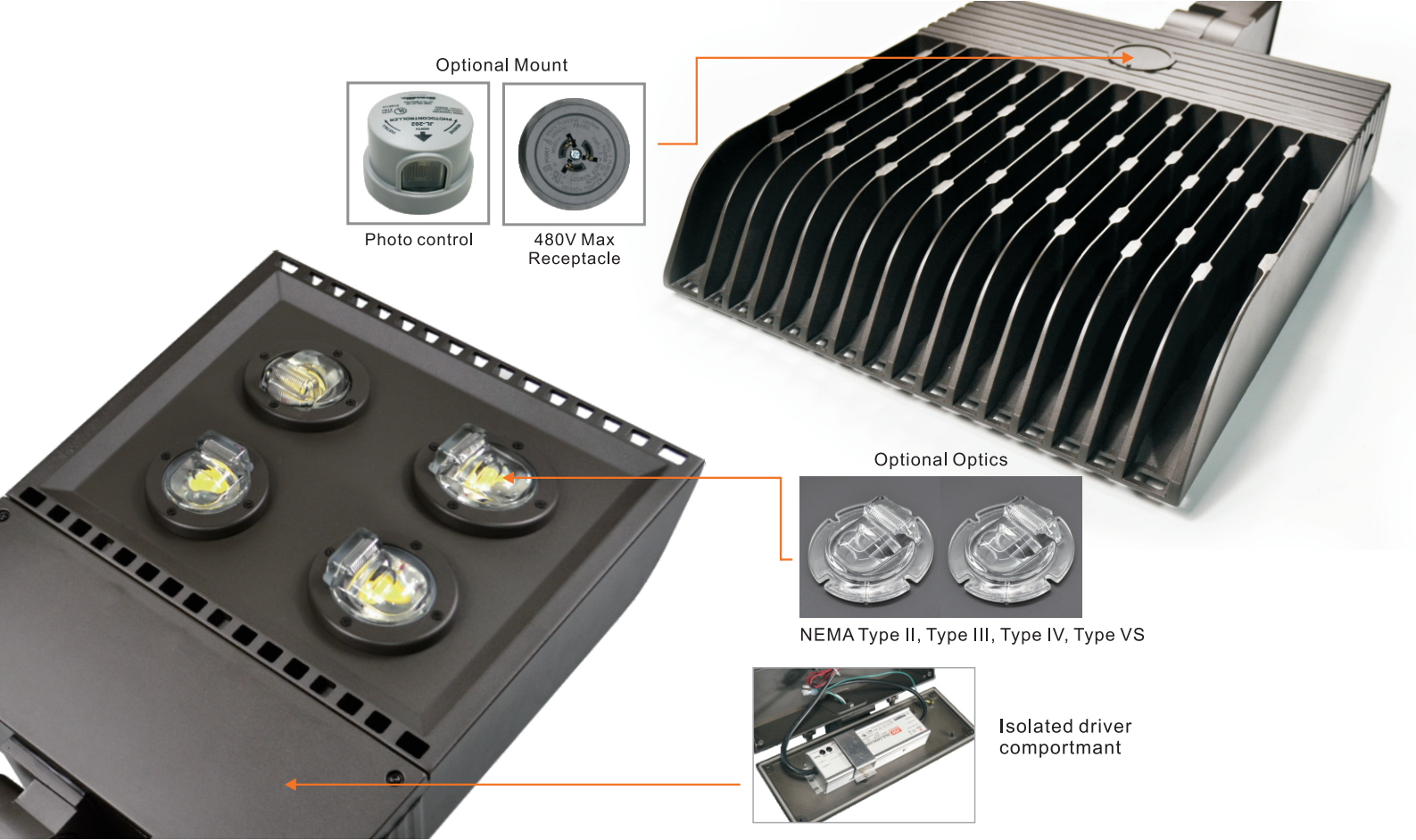
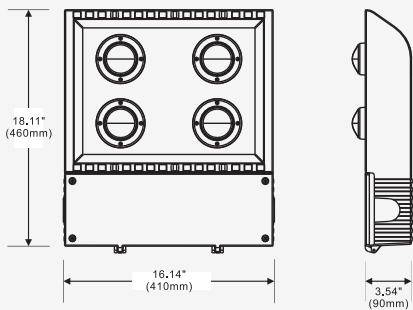
OPTIONS

- Optional 347V or 480V with adder
- Optional surge protector 10K with adder
- Optional NEMA photo control with adder
- Optional Type II, Type III, Type IV, Type VS optics with adder
- Finish - Bronze. Color option with adder

Line Drawing



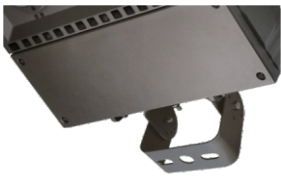
Dimensions



Available Options



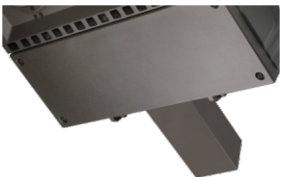
Slip Fitter



Trunnion



U Bracket



Pole mount

Specification

Model No.	LED-787T3	LED-787T5	LED-787T3	LED-787T5	LED-787T3	LED-787T5
System watts	145		199		256	
Lumen Output	19095 lm**	19618 lm**	28429 lm**	28915 lm**	34857 lm**	35671 lm**
Color	5000 K		5000 K		5000 K	
MA	900 MA		860 MA		1100 MA	
Input Voltage	120~277V/347V		120~277V/347V		120~277V/347V	
CRI	+ 70		+ 70		+ 70	
Starting Temp	-40°C		-40°C		-40°C	
Equivalent	250W MH		400W MH		400~600W MH	

* Different LED Kelvin temperature available with 4-6 week lead time. Please call for a quote.
** DISCLAIMER: This test report was produced in accordance with IES LM-79 photometric testing protocol for luminaires, using a single representative test fixture. Actual production units may vary from the values reported here by up to ±10%.

* Different LED Kelvin temperature available with 4-6 week lead time. Please call for a quote.
** DISCLAIMER: This test report was produced in accordance with IES LM-79 photometric testing protocol for luminaires, using a single representative test fixture. Actual production units may vary from the values reported here by up to ±10%.