



## LED Area Light/LED Flood Light

### LED-560P-L4



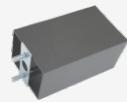
#### Available Options



Slip fitter



Trunnion

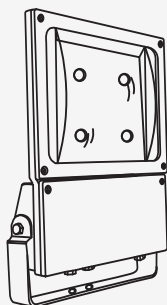


Pole mount

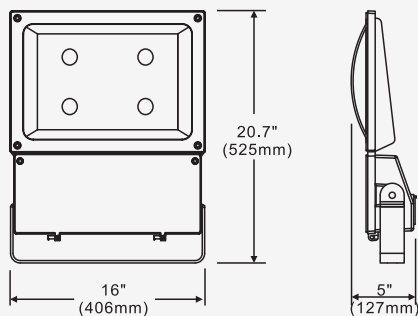


Photo control

#### Line Drawing



#### Dimensions



#### Product Description:

This powerful luminaire has been designed to meet diversified installation requirements. It can be used as a flood light and an area light. With built-in heatsinks on the back of the luminaire, the LED560 provides truly spectacular light while keeping the LEDs at a cool temperature.

Optional mounting and Kelvin color\* with adder.

#### Features:

##### LISTING

UL and CUL listed for wet locations

##### HOUSING

Solid construction die-cast aluminum body

##### FINISH

UV stabilized power coated finish

##### LENS

Heat and impact resistant tempered glass

##### OPTIONS

Twist lock photocell with adder

Front hinged cover

Dimmable option with adder

Finish - Bronze. Color option with adder

#### Specification

Model No. ▶	LED-560P-L4	
System watts ▶	172	235
Lumen Output ▶	17180 lm**	19366 lm**
Color ▶	5000 K	
MA ▶	1100 MA	1430 MA
Input Voltage ▶	120~277V	
CRI ▶	70+	
Starting Temp ▶	-40°C	
Equivalent ▶	400W MH	

\* Different LED Kelvin temperature available with 4-6 week lead time. Please call for a quote.

\*\* DISCLAIMER: This test report was produced in accordance with IES LM-79 photometric testing protocol for luminaires, using a single representative test fixture. Actual production units may vary from the values reported here by up to ±10%.