



# Grandlite®

HIGH POWER LIGHTING SYSTEM

## LED Area Light

### LED-1571



# Grandlite®

HIGH POWER LIGHTING SYSTEM

## LED Area Light

### LED-1571



### Product Description:

This compact but powerful flood light is a true innovation combining practicality and aesthetics. With highly efficient LED engine and precise optical control, greater lighting performance adds the value to its exterior appearance. Multiple mounting methods enable this fixture to be installed in any given environment.

Optional mounting and Kelvin color\* with adder.

### Features:

#### LISTING

UL and CUL listed for wet locations

#### HOUSING

Solid construction die-cast aluminum body

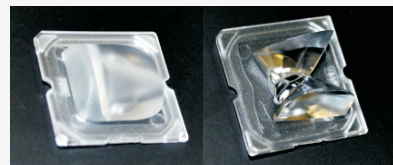
#### FINISH

UV stabilized powder coated finish

#### OPTIONS

Optional photo control with adder

Finish - Bronze. Color option with adder



DN/DW Lens Optional

### Available Options



Optional photo control



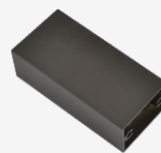
U Bracket



Slip fitter



SFS Brackets



Pole mount

Specification	
Model No.	LED-1571
System watts	46
Lumen Output	5018 lm**
Color	5000 K
MA	700 MA
Input Voltage	120~277V
CRI	70+
Starting Temp	-40°C
Equivalent	150W-175W MH

\* Different LED Kelvin temperature available with 4-6 week lead time. Please call for a quote.

\*\* DISCLAIMER: This test report was produced in accordance with IES LM-79 photometric testing protocol for luminaires, using a single representative test fixture. Actual production units may vary from the values reported here by up to ±10%.



LED-1571-SFB



LED-1571-SFS



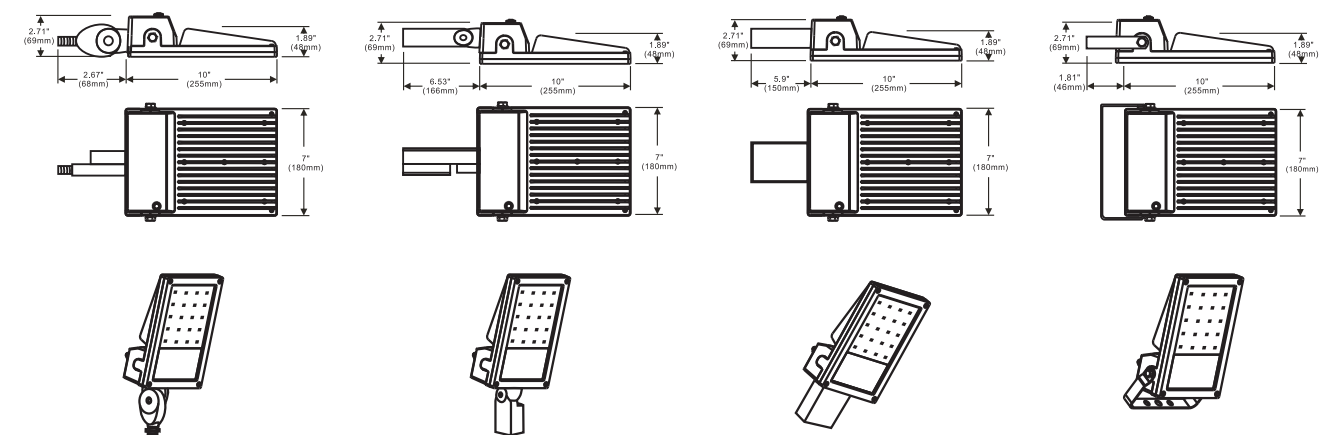
LED-1571-PM



LED-1571-U

### Dimensions

### Line Drawing



\* Different LED Kelvin temperature available with 4-6 week lead time. Please call for a quote.

\*\* DISCLAIMER: This test report was produced in accordance with IES LM-79 photometric testing protocol for luminaires, using a single representative test fixture. Actual production units may vary from the values reported here by up to ±10%.