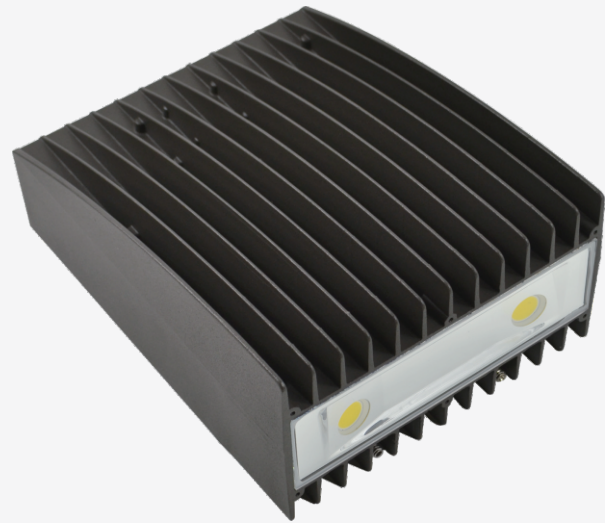




LED Surface Mount Light

LED-1860-L2



Available Options



Thru Wiring



Photo Control



Quick mount



TR Brackets



SFS Brackets



SFB Slip fitter

Product Description:

This newly designed luminaire with built-in heatsink in casting featuring its versatility that can be served as wall light, flood light and etc. Incorporated with high performance LED module along with high quality optical reflector, this fixture performs efficiently and steadily against harsh outdoor environment .

Optional mounting and Kelvin color* with adder.

Features:

LISTING

UL and CUL listed for wet locations

HOUSING

Solid construction die-cast aluminum body

FINISH

UV stabilized powder coated finish

LENS

High-impact resistant tempered glass

OPTIONS

Optional photo control with adder

Finish - Bronze. Color option with adder

Specification

| | | |
|---------------|-------------|-----------|
| Model No. | LED-1860-L2 | |
| System watts | 60 | 82 |
| Lumen Output | 6743 lm** | 7970 lm** |
| Color | 5000 K | |
| MA | 700 MA | 950 MA |
| Input Voltage | 120~277V | |
| CRI | 70+ | |
| Starting Temp | -40°C | |
| Equivalent | 250W MH | |

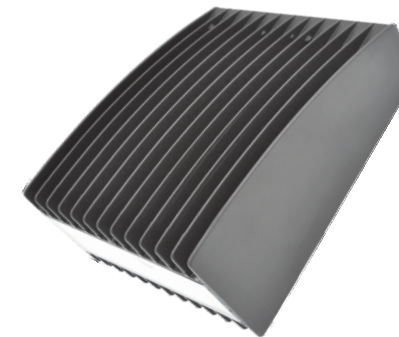
* Different LED Kelvin temperature available with 4-6 week lead time. Please call for a quote.

** DISCLAIMER: This test report was produced in accordance with IES LM-79 photometric testing protocol for luminaires, using a single representative test fixture. Actual production units may vary from the values reported here by up to ±10%.



LED Surface Mount Light

LED-1860-L2



LED-1860-L2



LED-1860-TR L2

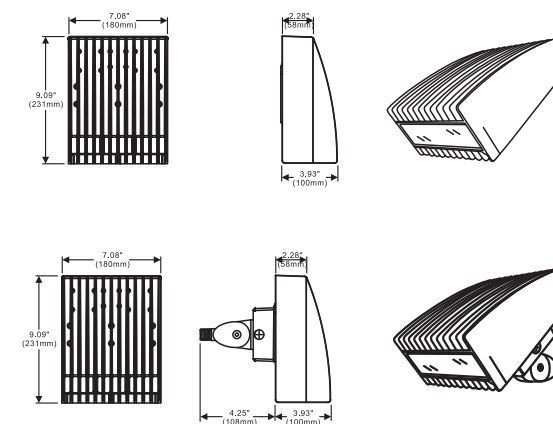


LED-1860-SFS L2

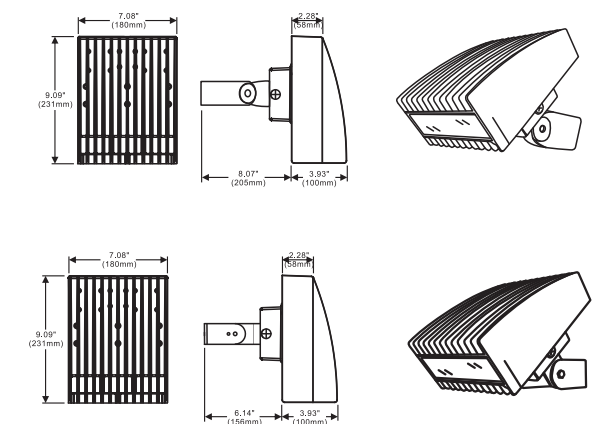


LED-1860-SFB L2

Dimensions



Line Drawing



* Different LED Kelvin temperature available with 4-6 week lead time. Please call for a quote.

** DISCLAIMER: This test report was produced in accordance with IES LM-79 photometric testing protocol for luminaires, using a single representative test fixture. Actual production units may vary from the values reported here by up to ±10%.

