

LED SURFACE MOUNT LIGHT
LED-1150B

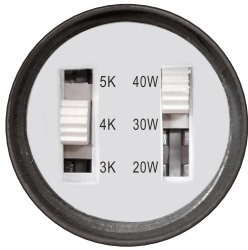


Meets DLC 5.1
Requirements



PRODUCT DESCRIPTION

Solid two-piece construction die-cast aluminum housing

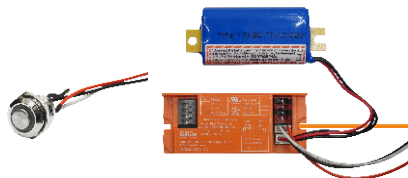


Side access to the FAO controller allows the end-user to easily choose from different wattages and CCTs

Heat and impact resistant borosilicate glass

Included Quick Mount Plate for an easy, contractor-friendly installation

Optional 4W EM with waterproof test button



Optional photocontrol



PRODUCT DESCRIPTION

Utilizing the latest generation of LEDs and a FAO smart controller, this wall pack delivers similar light output as a 150/200W metal halide and has multiple wattages and CCTs to choose from for different applications. The housing is made out of die-cast aluminum with reliable powder coating specifically for harsh outdoor environment. It is attractive in appearance and performance.

FEATURES

LISTING

UL and cUL listed for wet locations

HOUSING

Die-cast aluminum body

FINISH

UV stabilized powder coated finish

LENS

Heat and impact resistant borosilicate glass

OPTIONS

Finish - Bronze. Color option with adder

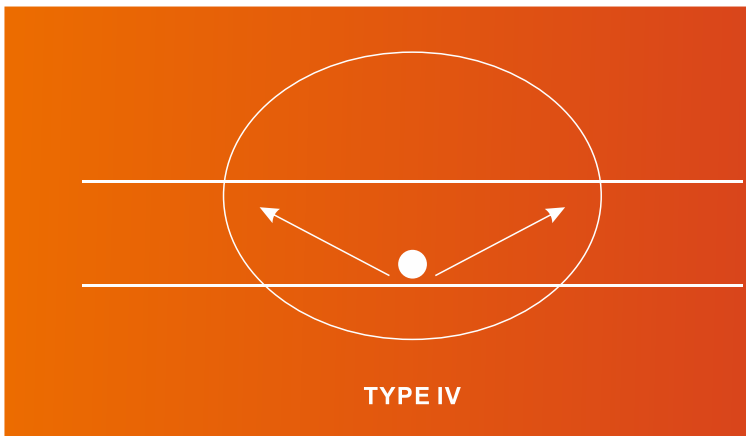
Optional Photocontrol



FEATURE

OPTICAL DISTRIBUTION

TYPE IV



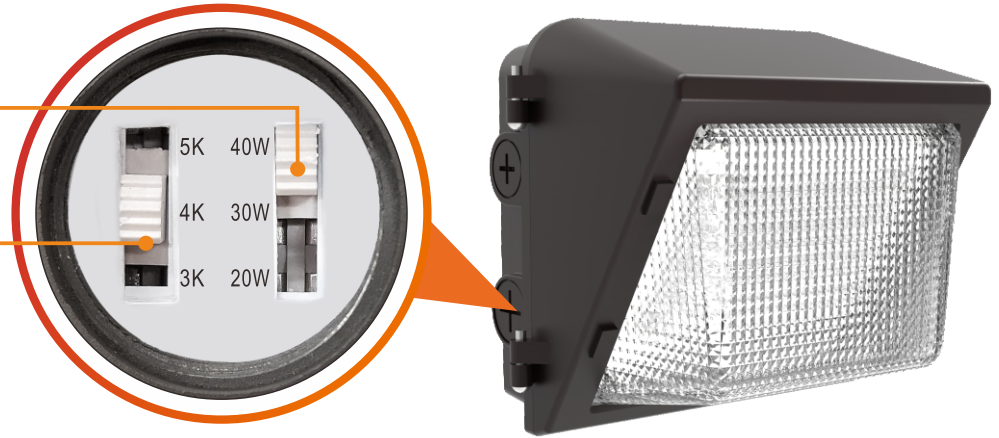
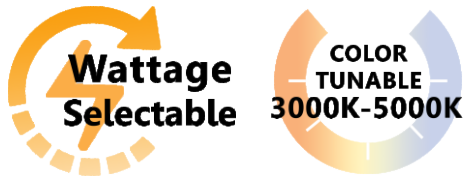
OPERATING INSTRUCTIONS

3 WATTAGE SELECTABLE

40 / 30 / 20W

3 CCT SELECTABLE

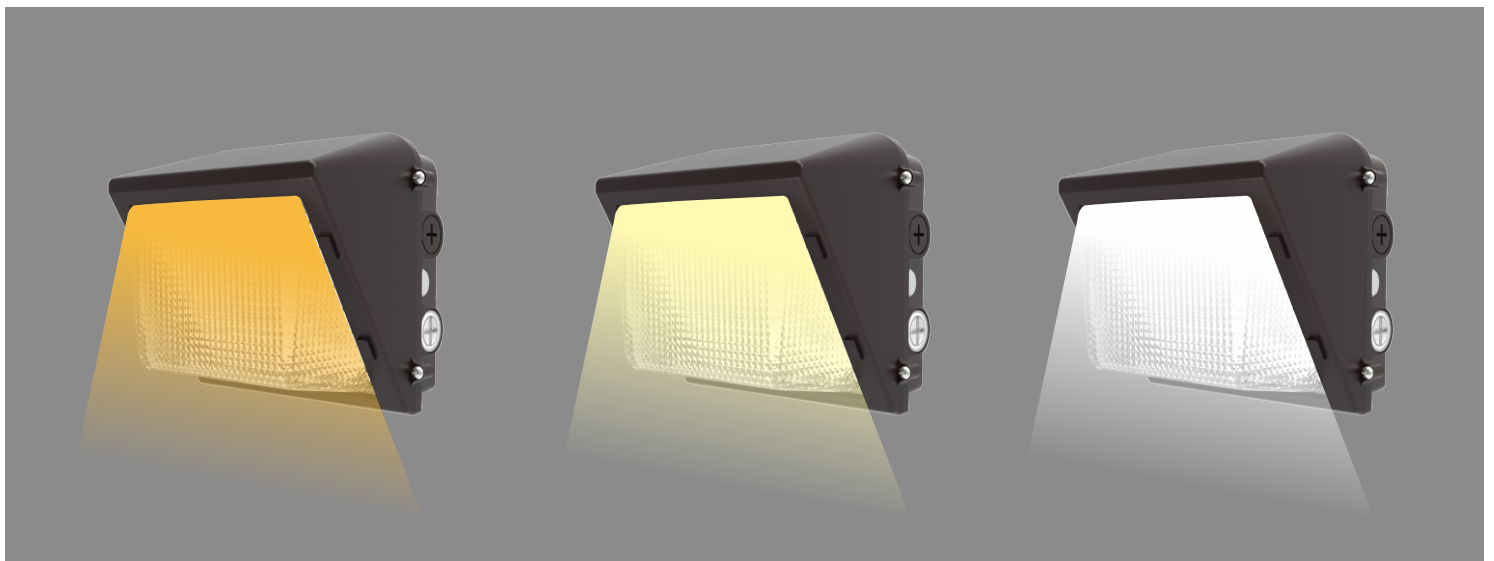
3000K / 4000K / 5000K



40W

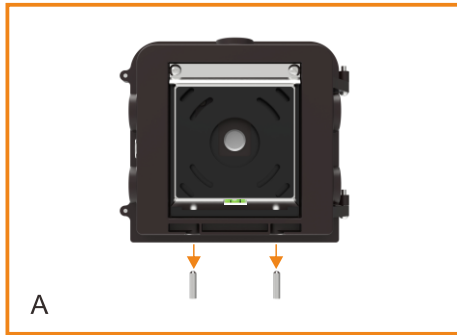
30W

20W

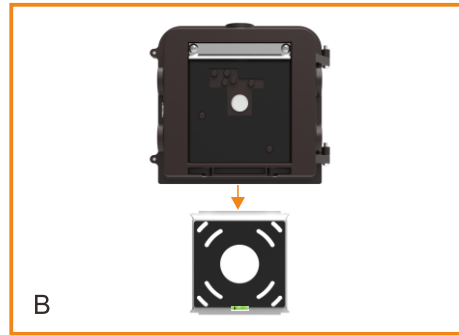


INSTALLATION METHOD

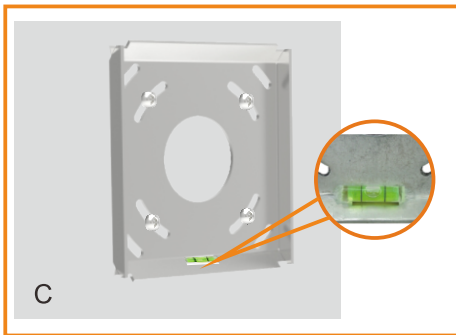
Unlike fixtures from our competitors that typically need multiple people for installation, our IMB (Intelligence Mounting Bracket) saves you both time and money. Its lightweight, compact, and user-friendly design allows for easy installation by a single person in a significantly shorter time. Additionally, you can ensure proper leveling using the built-in level bubbler on the bracket. In this competitive market, we recognize how crucial it is to minimize your labor costs and time.



Uninstall the mounting bracket from fixture base plate by unscrewing the 2 hex socket studs.



Remove the mounting bracket.



Using the level bubbler to level the bracket to the intended altitude. Install the bracket on the wall.

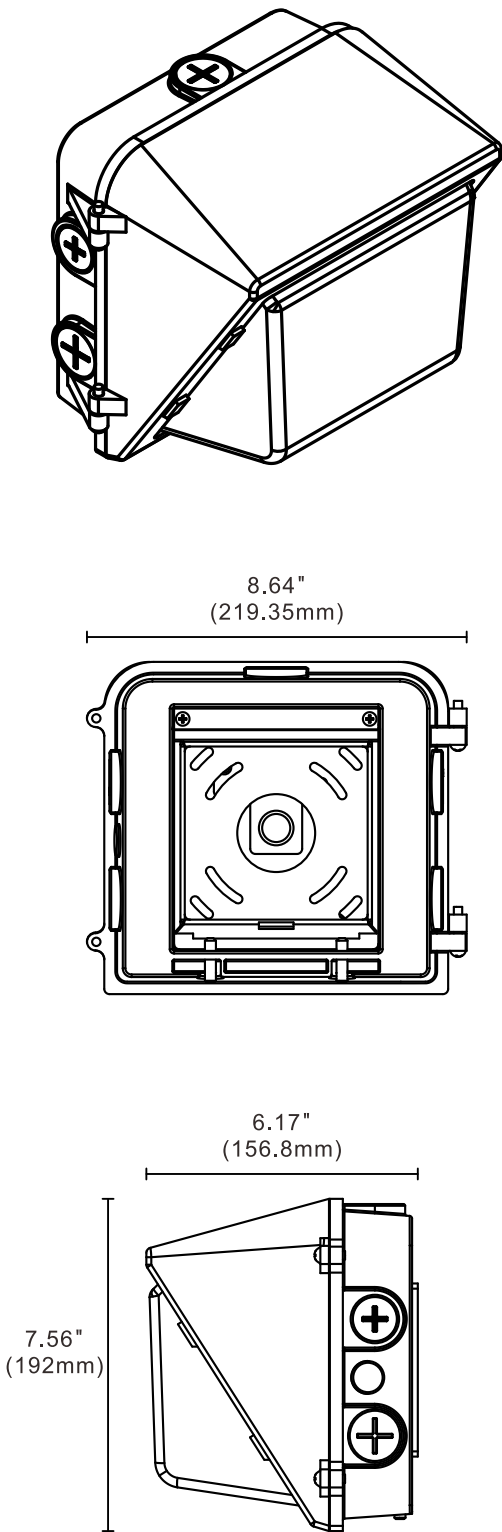


Lift the fixture up and tilt it slightly towards the wall mount bracket as figure D shown. Hook the fixture base plate to the mounting bracket.



Tightly screw and secure the fixture to the bracket

DIMENSION



PERFORMANCE DATA

Model No.	LED-1150B
Nominal Wattage	40 / 30 / 20W
Lumens*	6050 lm*
Efficacy*	156 lm/W*
*Lumen Output and Efficacy are based on the highest wattage at 5000K	

SPECIFICATION

Example:LED-1150BVA040UNV8TXT4ST-XXXXXX

Model No.	LED-1150B
Nominal Wattage	040=40W
Input Voltage	UNV=120-277VAC
CRI	8=80+
Color Temp	TX=3000K / 4000K / 5000K
Option	PC=Photocontrol
Finish	BN=Bronze
Operating Temp	-40°C - +40°C