



# LED Surface Mount Light

## SML-782



### Product Description:

Rugged traditional aluminum die cast housing provides proven environmental protection for LEDmodules. Traditional fixture designs provide a familiar look and standard installation requirements. Retaining this look allows the ability to upgrade fixtures gradually, while retaining the same overall fixture appearance throughout a facility.

### Performance Data:

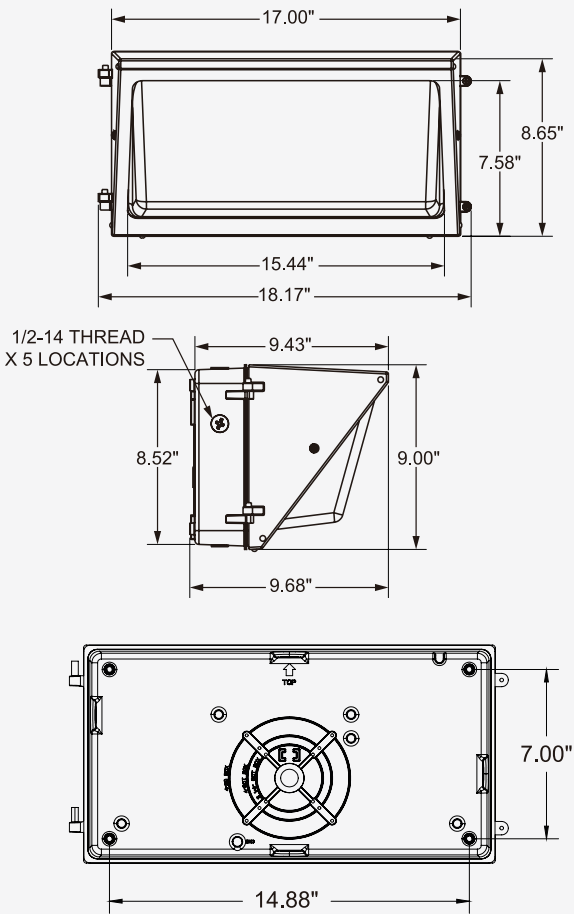
Model NO.	System Watts	Lumens	LPW
SML-782	120W	12510 lm**	106 lm/w

Lumen and Efficacy are based on the highest wattage at 5000K

### Specification:

Model No.	SML782		
System watts	64W	86W	120W
Lumen Output	7168 lm**	9120 lm**	12510 lm**
Color	3000K/4000K/5000K		
Input Voltage	120~277V		
CRI	80+		
Starting Temp	-40°C		
Equivalent	400W MH		

### Dimensions



\* Different LED Kelvin temperature available with 4-6 week lead time. Please call for a quote.

\*\* DISCLAIMER: This test report was produced in accordance with IES LM-79 photometric testing protocol for luminaires, using a single representative test fixture. Actual production units may vary from the values reported here by up to ±10%.