

Grandlite®

High Bay Lighting

LED-HBF



APPLICATIONS

	Retails & Supermarkets
	Hotels & Restaurants
	Commercial Buildings
	Offices And Showrooms
	Schools & Colleges



2022-01

Emergency system test switch
(included with optional
EM backup)



Easy access for 3-level
wattage tuning

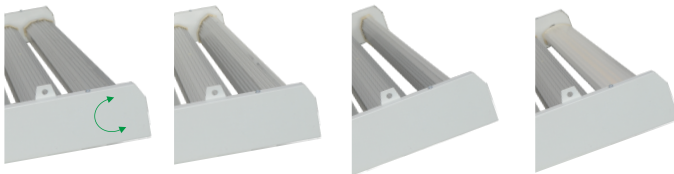
Diffuse lens with high optical efficiency (90%) allow for
high efficacy while providing wide coverage and uniformity
for any application

Easy access to all the
sensor controls

Tool-less entry simplifies the installation process



Outer light bars are 180° adjustable for applications
requiring up-light capability



50×90 optics



90° optics



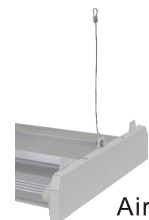
120° optics



V-Hook



Pendant



Aircraft Cable



Optional occupancy external sensor



Product Description:

This sleek new design from Grandlite combines a slim profile with high quality optics to produce a sleek and subtle aesthetic that meets most office ceiling applications. With its tool-less easy access wiring compartment, this fixture simplifies the installation process. Ideal for office spaces, supermarkets, and meeting rooms.

Features:

LISTING

- UL and CUL listed

HOUSING

- Housing made of high quality aluminum with high reflectance paint to provide high lumen output.

AMBIENT TEMPERATURE

- Suitable for use in -40°C to +50°C

EFFICACY

- Up to 165 lumens per watt (see individual wattage data)

OPTICS

- Diffuse lens provides superior uniformity

ELECTRICAL

- Standard universal 120-277VAC input
- 4KV Surge protector per ANSI/IEEE C62.41
- Standard 0-10VDC dimming driver

FINISHES

- Polyester powder coat white finish, multi-stage process produces 3mil thickness for superior corrosion and maximum environmental durability.

Model No.



LED-HBF2-2FT



LED-HBF4-2FT



LED-HBF2-4FT



LED-HBF4-4FT

Specification:

Example: LED-HBF

Model No.	Nominal Watts**	Input Voltage	CRI	Color Temp*	Sensor	Finish	Option
HBF2-2FT-100	100=100W	UNV=120-277VAC HV4=347/480VAC	8=80+	30=3000 K 40= 4000 K 50=5000 K	BLANK=No Sensor MS=Microwave Sensor	WH=White	EM=(Emergency Battery Back Up)
HBF2-2FT-150	155=155W						
HBF4-2FT-240	220=220W						
HBF4-2FT-300	300=300W						
HBF2-4FT-240	220=220W						
HBF2-4FT-300	300=300W						
HBF4-4FT-400	420=420W						

* Different LED Kelvin temperature available with 4-6 week lead time. Please call for a quote.

** DISCLAIMER: This test report was produced in accordance with IES LM-79 photometric testing protocol for luminaires, using a single representative test fixture. Actual production units may vary from the values reported here by up to ±10%.

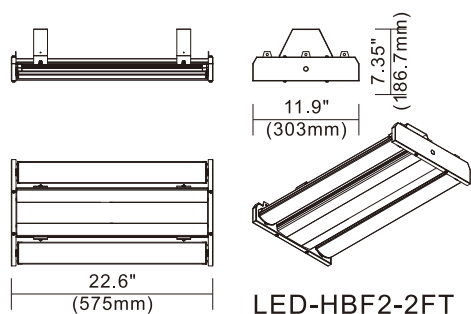


Performance Data

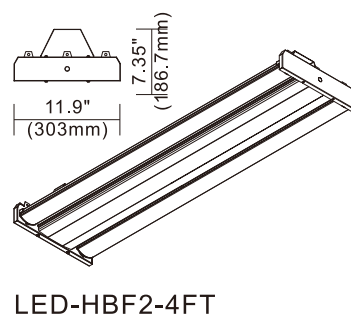
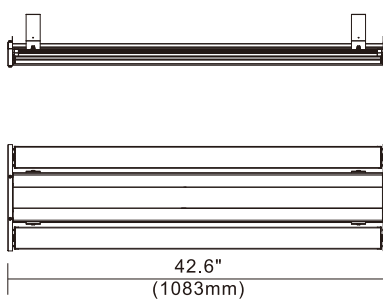
Model NO.	Nominal Watts**	Dist. Type	Lumen*	Efficacy*	B	U	G
LED-HBF2-2FT-100	100W	Type V	16198/14254/12148 lm	158 lm/W	4	3	3
LED-HBF2-2FT-150	155W	Type V	24568/21620/18426 lm	157 lm/W	4	3	3
LED-HBF4-2FT-240	220W	Type V	36000/32000/27000 lm	158 lm/W	4	3	3
LED-HBF4-2FT-300	300W	Type V	45000/39600/33750 lm	158 lm/W	4	3	3
LED-HBF2-4FT-240	220W	Type V	36000/32000/27000 lm	158 lm/W	4	3	3
LED-HBF2-4FT-300	300W	Type V	45000/39600/33750 lm	158 lm/W	4	3	3
LED-HBF4-4FT-400	420W	Type V	58000/51000/43500 lm	158 lm/W	4	3	3

* Lumen and Efficacy are based on 4000K

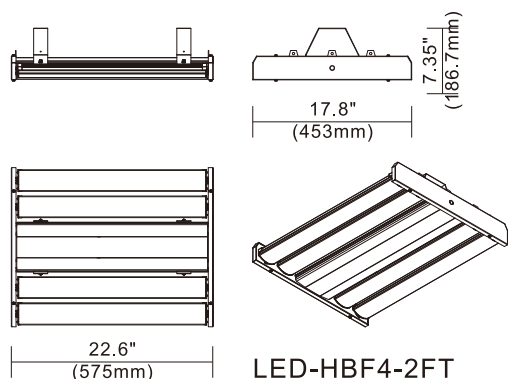
Dimension:



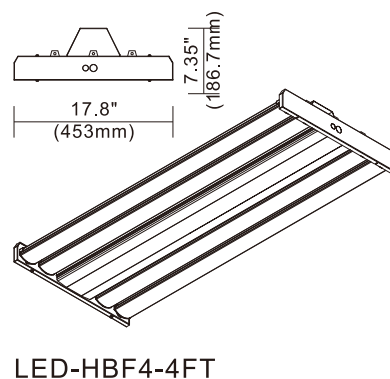
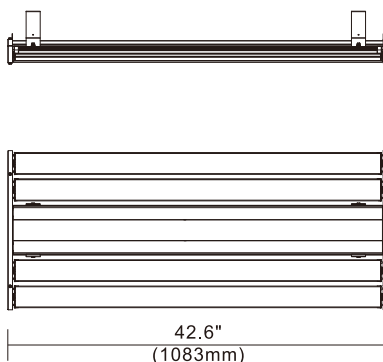
LED-HBF2-2FT



LED-HBF2-4FT



LED-HBF4-2FT



LED-HBF4-4FT



505 S. Yorlita Road, City of Industry, CA 91744, USA

Tel: (626) 839-8868 Fax: (626) 581-8099

e-mail: sales@grandlite.com

www.grandliteled.com