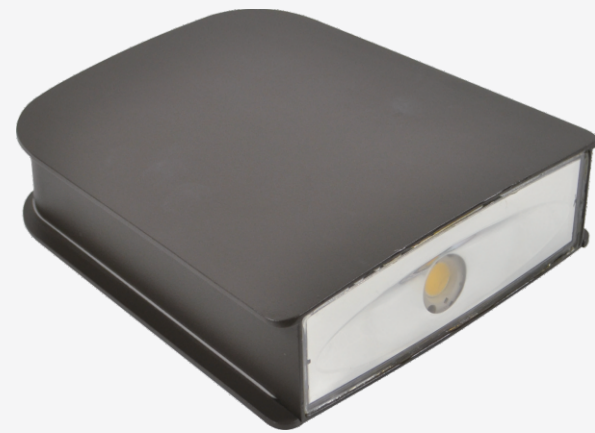




LED Surface Mount Light

LED-1850B



Available Options



Thru Wiring



Photo Control



Quick mount



TR Brackets



SFS Brackets



SFB Slip fitter

Product Description:

This newly designed luminaire with built-in heatsink in casting featuring its versatility that can be served as wall light, flood light and etc. Incorporated with high performance Led module along with high quality optical reflector, this fixture performs efficiently and steadily against harsh outdoor environment .

Optional mounting and Kelvin color* with adder.

Features:

LISTING

UL and CUL listed for wet locations

HOUSING

Solid construction die-cast aluminum body

FINISH

UV stabilized powder coated finish

LENS

High-impact resistant tempered glass

OPTIONS

Optional 347V with adder

Optional photo control with adder

Finish - Bronze. Color option with adder

Specification

Model No.	LED-1850B				
System watts	14	22	30	40	58
Lumen Output	1380 lm**	2177 lm**	2890 lm**	4121 lm**	6920 lm**
Color	5000 K				
MA	300 MA	480 MA	700 MA	950 MA	1400 MA
Input Voltage	120~277V				
CRI	70+				
Starting Temp	-40°C				
Equivalent	70W MH	70W-100W MH	100W-150W MH	150W MH	200W MH

* Different LED Kelvin temperature available with 4-6 week lead time. Please call for a quote.

** DISCLAIMER: This test report was produced in accordance with IES LM-79 photometric testing protocol for luminaires, using a single representative test fixture. Actual production units may vary from the values reported here by up to ±10%.



LED Surface Mount Light

LED-1850B



LED-1850



LED-1850-SFS

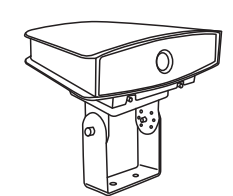
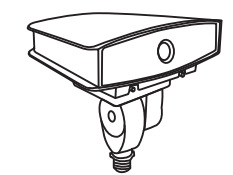
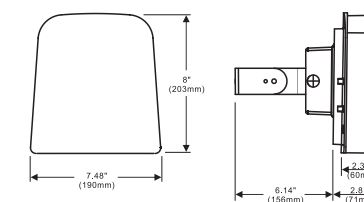
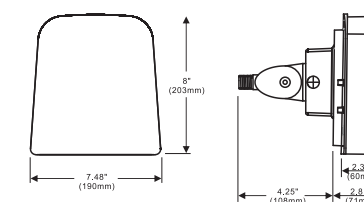
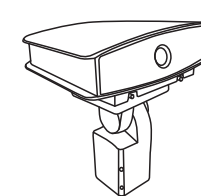
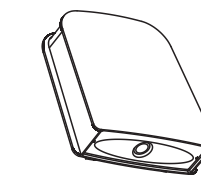
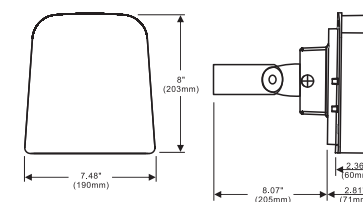
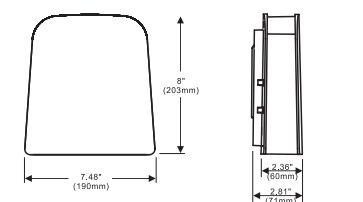


LED-1850-SFB



LED-1850-TR

Dimensions



Line Drawing

* Different LED Kelvin temperature available with 4-6 week lead time. Please call for a quote.

** DISCLAIMER: This test report was produced in accordance with IES LM-79 photometric testing protocol for luminaires, using a single representative test fixture. Actual production units may vary from the values reported here by up to ±10%.

